



# HTH616C SERIES-III

Featuring a highly efficient valve and extensive optionality, the versatile HTH616C Series-III is performance-ready for productivity on wheeled or tracked carriers.

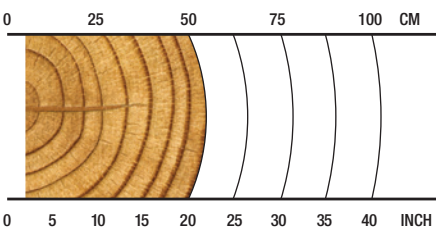
**OVERVIEW**

Harvesting in early-to-late thinnings; productive processing or debarking.

**APPLICATIONS**









- Hardwood harvesting/processing
- Softwood harvesting/processing
- Debarking
- Early thinnings
- Late or final thinnings/clear felling

**RECOMMENDED RANGE**



**5-51 cm / 2-20 in.**

**SPECS**

-  **1800 kg / 3,968 lb.**  
From: Without Rotator and Link
-  **2000 kg / 4,409 lb.**  
From: Without Link; Std. Rotator
-  **35 MPa / 5,075 psi**  
Max Hydraulic Pressure
-  **660 mm / 26 in.**  
Max Delimb Opening
-  **685 mm / 27 in.**  
Max Feed Roller Opening\*  
\*Harvesting knives
-  **550 mm / 22 in.**  
Max Sawing Capacity
-  **20+ metric ton**  
Carrier Size
-  **20-30 metric ton**  
Carrier Size



**SPECIFICATIONS**

DIMENSIONS	
Width, head open (mm/in.)	1600 / 63
WEIGHT	
Base weight excluding rotator, link and some options (kg/lb.)	1800 / 3,968
Base weight std. rotator, excluding link and some options (kg/lb.)	2000 / 4,409
ROTATION	
	360 continuous or 320 degree
DELIMBING	
Delimiting knives	1 fixed front, 2 moving*, 1 fixed rear <small>(*option for single lower delimb)</small>
Maximum delimb opening processing knives (mm/in.)	660 / 26
Maximum delimb opening harvesting knives (mm/in.)	685 / 27
DRIVE	
Quantity drive rollers	3
Motor cc - option 1 (drive, fixed)	(500, 315)
Maximum feed speed - option 1 (m/s, ft/s)	8.3 / 27
Motor cc - option 2 (drive, fixed)	(630, 400)
Maximum feed speed - option 2 (m/s, ft/s)	6.6 / 21.6
Motor cc - option 3 (drive, fixed)	(800, 500)
Maximum feed speed - option 3 (m/s, ft/s)	5.2 / 17.0
Maximum roller opening (mm/in.)	680 / 27
Minimum feed arm diameter (mm/in.)	50 / 2
TOP SAW	
Maximum cut diameter (mm/in.)	320 / 13
Length of saw bar (mm/in.)	420 / 17
Chain type (in.)	0.404
Top saw motor displacement	10 cc
CARRIER RANGE	
Wheeled (metric tons)	20+
Tracked (metric tons)	20-30

**SPECIFICATIONS**

BUTT / FELLING SAW	
Standard Saw	SC100
Maximum cut diameter (mm/in.)	550 / 22
Length of saw bar (mm/in.)	750 / 29
Chain type (in.)	0.404
Saw motor	3/4" - 45 cc & .404 - 20 cc
Oil tank capacity (L/gal.)	10 / 2.6
HYDRAULIC SYSTEM	
Maximum operating pressure (MPa/psi)	35 / 5,075
Maximum pump capacity (L/min., gal./min.)	320-360 / 85-95
CONTROL AND MEASURING SYSTEM	
	<b>TimberRite H-16</b>
OPTIONAL EQUIPMENT	
Optional Butt Saw	Waratah AT 3/4"
Maximum cut diameter (mm/in.)	550 / 22
Length of saw bar (mm/in.)	740 / 29
No top saw	yes
Continuous 360-degree rotation	yes
Color marking	yes
Stump spray	yes
Cast processing upper delimb arms	yes
Cast harvesting (CTL) upper delimb arms	yes
Debarking feed rollers	yes
Steel thumbnail feed rollers	yes
Alpine	yes
Optional lower delimb	yes
Optional rotators	yes
Second diameter sensor	yes
Find end sensor	yes
Harvesting guarding	yes
Snow hole guarding	yes
Pressure sensors (M, CD, T)	yes

